

Welcome to November CARE Meeting  
Topic: *School Resources*

Parent Teacher Student  
**Resources**

# Due outs from October CARE Meeting

- ▶ **MEDDAC:** COL Eliasib Lozano – Will look into moving appointment times for school age children for early morning and late afternoon. Additionally, review check-in practices.
- ▶ **DFMWR:** Mr. Alvin Gelineau – Ensure CARE documents are more easily assessable on the MWR website.

# Phenix City School District

*Schools of Inquiry, Innovation, and Impact*

**Mr. Randy Wilkes, Superintendent, Educational  
Services Center**

Website: <https://www.pcboe.net/>



**PHENIX CITY  
PUBLIC SCHOOLS**  
CHANGING LIVES • EMPOWERING FUTURE LEADERS

**"A" on State Report Card  
Most Improved System in State**



- 340 AdvancED score
- 97% Federal Grad Rate
- H devices (K-12)
- SMARTLabs K-5
- First Class Pre-K #1 in Nation
- Dyer Family STEM Center
- All K-8 AMSTI
- K4-12 STEM Education
- Accelerated Academy
- 50+ Clubs/Organizations



- 1,785 collegiate hours earned 2018-19
- Over \$20 million in scholarships Class of 2019
- Career Tech: automotive, business, carpentry, computer science, cosmetology, culinary arts, engineering, healthcare, HVAC, masonry, NJROTC, TV production, welding



PO Box 460 • Phenix City, AL 36868 • 334-298-0534 • [www.pcbs.net](http://www.pcbs.net)



# Lee County School District

A Tradition of Excellence- A Vision for Tomorrow

**Dr. James McCoy, Ed.D**

**Superintendent**

Website: <https://www.lee.k12.al.us/>





# **Russell County School District**

**Tammy Barnes,**  
**Director of Administrative Services**



# Russell County is ON THE MOVE!















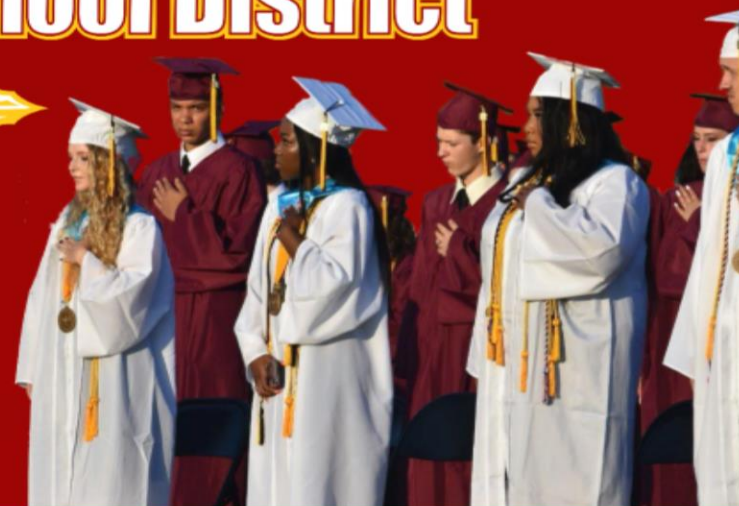




# Russell County School District



**INSPIRE,  
EMPOWER, &  
EDUCATE  
WITH EXCELLENCE**





# Muscogee County School District

**Dr. David F. Lewis, Superintendent**

Questions: Please contact Ms. Darlene Register:  
[Register.Darlene@Muscogee.k12.ga.us](mailto:Register.Darlene@Muscogee.k12.ga.us) or (706) 748-2254



# **CHATTAHOOCHEE COUNTY SCHOOL DISTRICT**

**DR. KRISTINA BROOKS, SUPERINTENDENT**  
**WEBSITE: [WWW.CHATTCO.ORG](http://WWW.CHATTCO.ORG)**

# PROFILE OF A CHATTAHOOCHEE COUNTY SCHOOL DISTRICT GRADUATE



## ACQUIRE

Every Chattahoochee County Panther graduate will learn the necessary skills and training that are essential for success.

### **Every graduate will have:**

- 🎓 A Strong Academic Base
- 🎓 Valuable Work Skills
- 🎓 Adaptable Leadership Skills

## ASPIRE

Every Chattahoochee County Panther graduate will apply work skills and academic achievement for lifelong success.

### **Every graduate will be:**

- 🎓 Future Driven Visionaries
- 🎓 Well Rounded Individuals



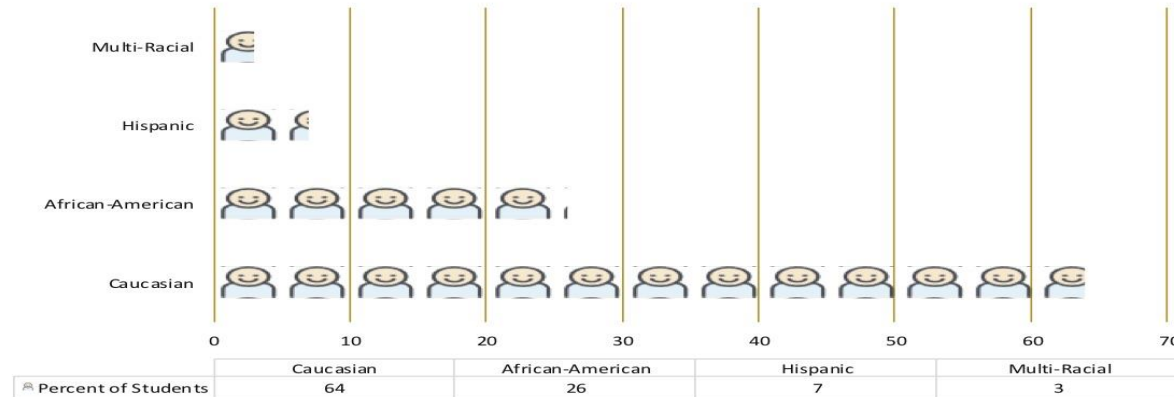


# Chattahoochee County School District—At a Glance

Total Number of ChattCo Students: 1000

Elementary School: PreK-5 — 300    Middle School: 6-8 — 200    High School: 9-12 — 500

## Student Population - Ethnicity



## Student Population

- \* County residents: 40%
- \* Federally connected through military: 50%
- \* Out of county- system of choice: 10 %

## Teaching Staff

- \* 65% faculty with Master's degree or higher
- \* Average teaching experience 13 years

## Programs and Services

- \* Chattahoochee Valley Academy: a Georgia College and Career Academy for grades 9-12
- \* Dual enrollment through Columbus Technical College and Columbus State University
- \* Advanced Placement Academics 9-12
- \* Career, Technical and Agricultural Education 9-12
- \* JROTC 9-12
- \* Career Exploration 5-8
- \* Alternative learning and virtual program for grades 6-12
- \* Gifted Education services K-12
- \* Special Education Program for Exceptional Learners preK-12
- \* Onsite community day care for birth-3 years old

# Chattahoochee County School District—At a Glance



## System Accountability

- \* Awarded Governor's Office of Student Achievement Gold Star Award for Greatest Gains
- \* State accountability of College Career Readiness Performance ranked higher than state average
- \* Highest CCRPI in Chattahoochee Flint RESA region of contiguous 15 school systems
- \* Graduation Rate exceeds regional and state averages

## Special offerings

- \* Daycare curriculum aligned to the Chattahoochee Valley BASICS to promote early learning
- \* Before and After School Program
- \* K-12 Fine Arts
- \* 6-12 athletics (basketball, football, volleyball, soccer, wrestling, track and field participating at state and regional finals)
- \* State level award winning FBLA program
- \* Academic Decathlon
- \* Rifle and Drill team
- \* Math Team
- \* National Honor Society (4-12)
- \* Technology Integration/ 1:3 ratio of device per student
- \* STEM enhancements
- \* Governor's Honor Program participants
- \* Advanced Placement Scholars with Honors and Distinctions

## College and Career Readiness

- \* Graduating class with over \$2,500,000 in scholarships
- \* More than 40% of graduates eligible for Georgia HOPE Scholarship
- \* Nearly 300 students dually enrolled through post secondary college and universities
- \* Four-year Graduation rate: 90%

# Fort Benning Schools

Lisa B. Coleman, Ph. D.  
Georgia/Alabama Community Superintendent

dodea americas  
SOUTHEAST DISTRICT



# Fort Benning Schools

*Fort Benning, Home of the MCOE*



## **Dexter Elementary School – 350 students**

Ms. Edwina Smith, Principal



## **McBride Elementary School – 520 students**

Ms. Michelle Allen, Principal

Dr. Amy Dilmar, Assistant Principal



## **Stowers Elementary School – 585 students**

Ms. Debbie Parks, Principal

Dr. Maribeth Henderson, Assistant Principal



## **White Elementary School – 527 students**

Dr. Renee Mallory, Principal

Dr. Todd Carver, Assistant Principal



## **Faith Middle School – 539 students**

Dr. Joan Verrett, Principal

Ms. Ronneeke Gamble, Assistant Principal

# Accomplishments

*Fort Benning, Home of the MCOE*

- 2016 - Morris McBride Elementary School selected as a National Blue Ribbon School
- 2017 - Kelisa Wing – Faith Middle School Teacher selected as the DoDEA Teacher of the Year
- 2018 - E.A. White Elementary School selected as a National Blue Ribbon School

# Contact Information

*Fort Benning, Home of the MCOE*

***Dr. Lisa Brooks Coleman***

Georgia/Alabama Community Superintendent

DoDEA Americas Southeast District

Office: 706-545-7276

Email: [supt.GAAL.DSO@am.dodea.edu](mailto:supt.GAAL.DSO@am.dodea.edu)



A photograph of a classroom scene. In the foreground, the back of a young boy's head and shoulders are visible; he is wearing a blue and white plaid shirt. His right arm is raised, with his hand open, as if he wants to answer a question. In the background, a teacher in a red shirt is standing and facing the class. Other students are partially visible, including one in a green shirt. The text is overlaid on the top left of the image.

# Set your sights on success.

Online tutoring and homework help for U.S. military and their families provided 24/7 at no cost by the U.S. Department of Defense and Coast Guard Mutual Assistance.

## Tutor.com for U.S. Military Families

**Funded by the DoD MWR Library Program to provide free online tutoring and homework help for:**

- K-12 dependents of Active Duty service members in all branches
- K-12 dependents of Active/Full-Time and Deployed National Guard & Reserve personnel
- All K-12 children attending schools operated and funded by DoDEA

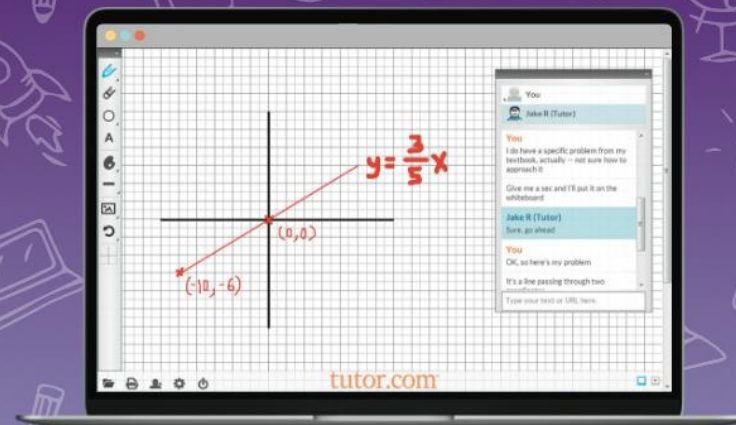
[tutor.com/military](https://tutor.com/military)



tutor.com™  
**tutor.com/military**

**HOMEWORK HELP**  
For U.S. Service Members & Children

# Set Your Sights on Academic Success



## **EXPERT TUTORS AVAILABLE AROUND-THE-CLOCK**

Work with a live subject matter expert 24/7 from any internet-connected computer or mobile device.



## **40+ SUBJECTS, ALL SKILL LEVELS**

From math and science to English and history, get tutored in more than 40 subjects, grades K-12 through college.



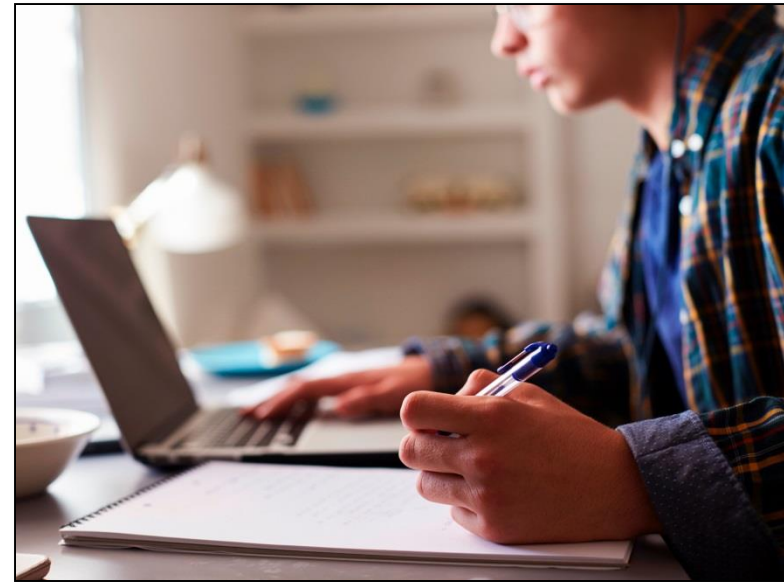
## **MORE THAN JUST THE BASICS**

Improve writing skills, take practices quizzes, get help with AP® subjects, prep for tests, polish resumes and more.

tutor.com/military

# Tutor.com/military: More than you might think

- Tutoring for students at all skill levels
  - 1:1 Homework help
  - Understanding concepts
  - Studying for exams
  - Standardized test prep, including SAT & ACT Essentials in partnership with The Princeton Review
  - Checking work
  - Practice quizzes
    - ASVAB
    - Subject-specific
  - Writing support



# Support for 50+ Subjects



## Science

Basic Science, Earth, Biology, Chemistry, Physics, Anatomy & Physiology, Microbiology



## World Languages

Spanish, French, German, & Italian



## ESL & ELL

English Language Use, English Writing, Types of Writing



## English

Vocabulary, Grammar, Literature, Writing Center – get help organizing, drafting & reviewing papers, Primary Reading (Grades 1-7)



## Social Studies

U.S. History, World History, European History, Geography, Civics & Government



## Grades K-12

Reading, AP Subjects and Test Prep, SAT/ACT Essentials



## Math

Basic Math, Algebra I & II, Geometry, Trigonometry, Calculus, Statistics, Pre-Algebra, Pre-Calculus



## Technology

Microsoft PowerPoint, Excel, and Word



## Business

Introductory Accounting, Econ, and Finance

## En Español

Matemáticas , Ciencias, Estudios Sociales



# Work 1:1 with a Tutor in the Secure Classroom

Students and tutors communicate in the private online classroom by typing in the text chat box and by drawing on the interactive whiteboard. As the student draws, the tutor sees it and vice versa. The classroom also includes a graphing calculator, text editor, and the option to share files and images.

The screenshot displays the Tutor.com Classroom interface within a Google Chrome browser. The address bar shows a URL for a specific session. The interface includes a toolbar at the top with options like Whiteboard, Graphing Calculator, Code Editor, Text Editor, Share File, Print, Settings, Add to Favorites, and End Session. The main workspace is a large grid where a math problem is presented: "Solve each system by graphing." followed by the equations  $y = -\frac{5}{3}x + 3$  and  $y = \frac{1}{3}x - 3$ . A smaller grid to the left shows a coordinate plane with x and y axes ranging from -5 to 5. The main grid features a graph of the line  $y = -\frac{5}{3}x + 3$  in orange, with blue tick marks and labels at (0, 3) and (3, 0). A chat window on the right side shows a conversation between "Margaret A (Tutor)" and "You". The chat messages are: Margaret A (Tutor): "Let me mark that on the board for us, and then we can start connecting our points to draw the line"; You: "Ah, OK, I think I understand..."; Margaret A (Tutor): "Then we would just connect those points you've marked, right?"; You: "Exactly right! Great job 😊". A text input field at the bottom of the chat window says "Type your text or URL here."

# School Support Services

*A Driving Force for Student Success*

Army Families can contact their local School Liaison Officers for more information.

Ethan Branch and Marcus DuBose

School Liaison Officers

Building 85, 6850 Barron Avenue

Fort Benning, GA 31905

Office Phones: (706) 545-3062 and (706) 626-8625

Mobile: (706) 681-7010 and (706) 604-8571

[ethan.d.branch.naf@mail.mil](mailto:ethan.d.branch.naf@mail.mil)

[marcus.l.dubose.naf@mail.mil](mailto:marcus.l.dubose.naf@mail.mil)

# Santa's Castle

**Ms. Melanie Wilhite, President**

Email: [fortbenningssantacastle@gmail.com](mailto:fortbenningssantacastle@gmail.com)

Phone: 706-326-6338



A still life photograph of autumn harvest produce. A wicker basket is filled with various pumpkins, apples, and corn. Spilled around the basket on a wooden surface are more pumpkins, apples, corn cobs, and autumn leaves. The background is a rustic wooden wall.

The next CARE Meeting is scheduled  
for Tuesday, 3 December!

*Have a great holiday!*